
Making Innovation Routine

*Sparking collaboration through technology at every stage
of planning, design, and construction*



Introductions



Jon Pahl – Moderator, ASHE HCC, LEED AP
President, Midwest Region



Wesley Hoyt FACHE, Fellow, American College of Healthcare Executives
Chief Operations Officer - Hutchinson Regional Medical Systems



Jon Miller
RN, BSN, CCRN - Hutchinson Regional Medical Systems



HFG
architecture

Nancy Steele AIA, NCARB, LEED AP, Principal
Senior Project Manager - HFG Architecture



Lacey Brown
Business Development – SMA Engineering



Hutchinson Regional Medical Center

ICU Addition and Infrastructure Renovation Project



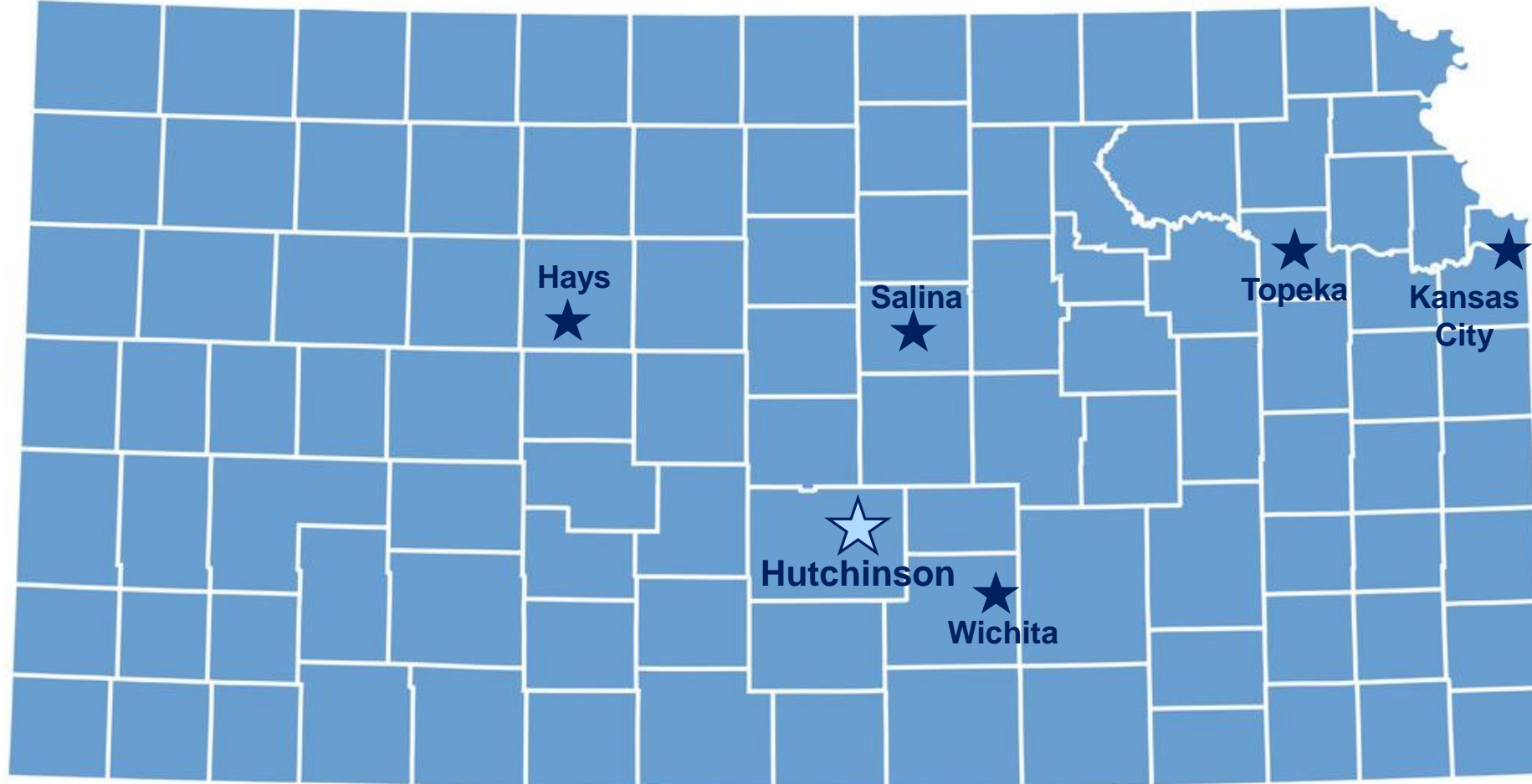
- \$24M Project; Largest in community in years
- 25,000 square feet
- Critical to support the aging demographic
- Supported Service Lines:
 - Pulmonology
 - Cardiology
 - General Surgery
 - Neurology
 - Cardio – Thoracic Surgery
 - Orthopedics, etc.
- Top ICU in the Region
- Scalable to meet future demands
- Model of innovation and collaboration;
something the community would be proud of
- Completely Patient and Staff centered

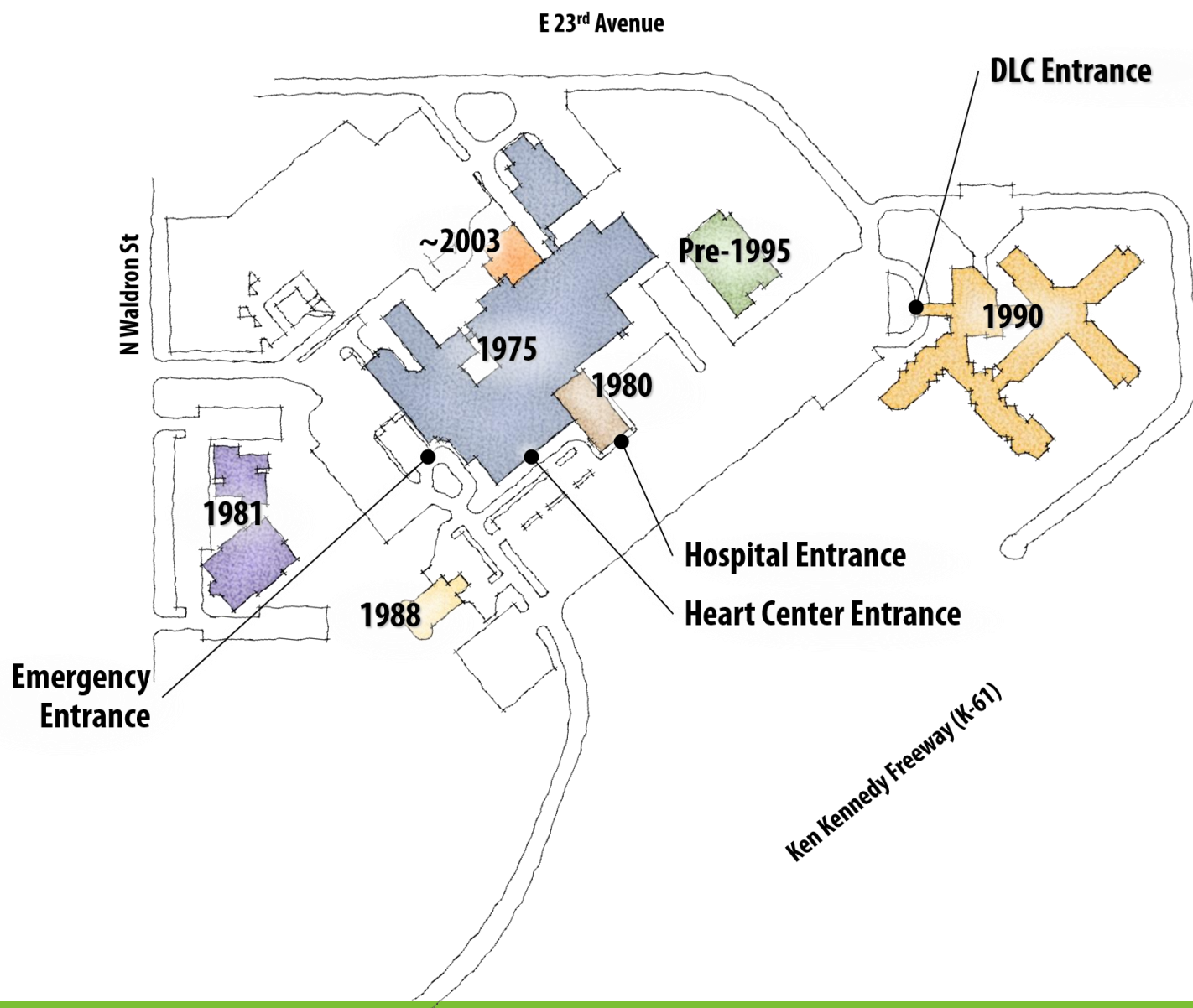


Setting The Stage

From An Owner's Perspective







- Hutchinson Regional Healthcare System
 - Hutchinson Regional Medical Center
 - Hospice and Home Care of Reno County
 - Horizons Mental Health Center
 - Health E-Quip
 - Mainline LLC
 - Foundation
- 1300+ employees
- Largest employer in Reno County
- Primary and secondary service area =
 - 9+ counties & 106K covered lives
- Storefronts in 7 counties
- Serves Reno County – second ‘oldest’ county in KS

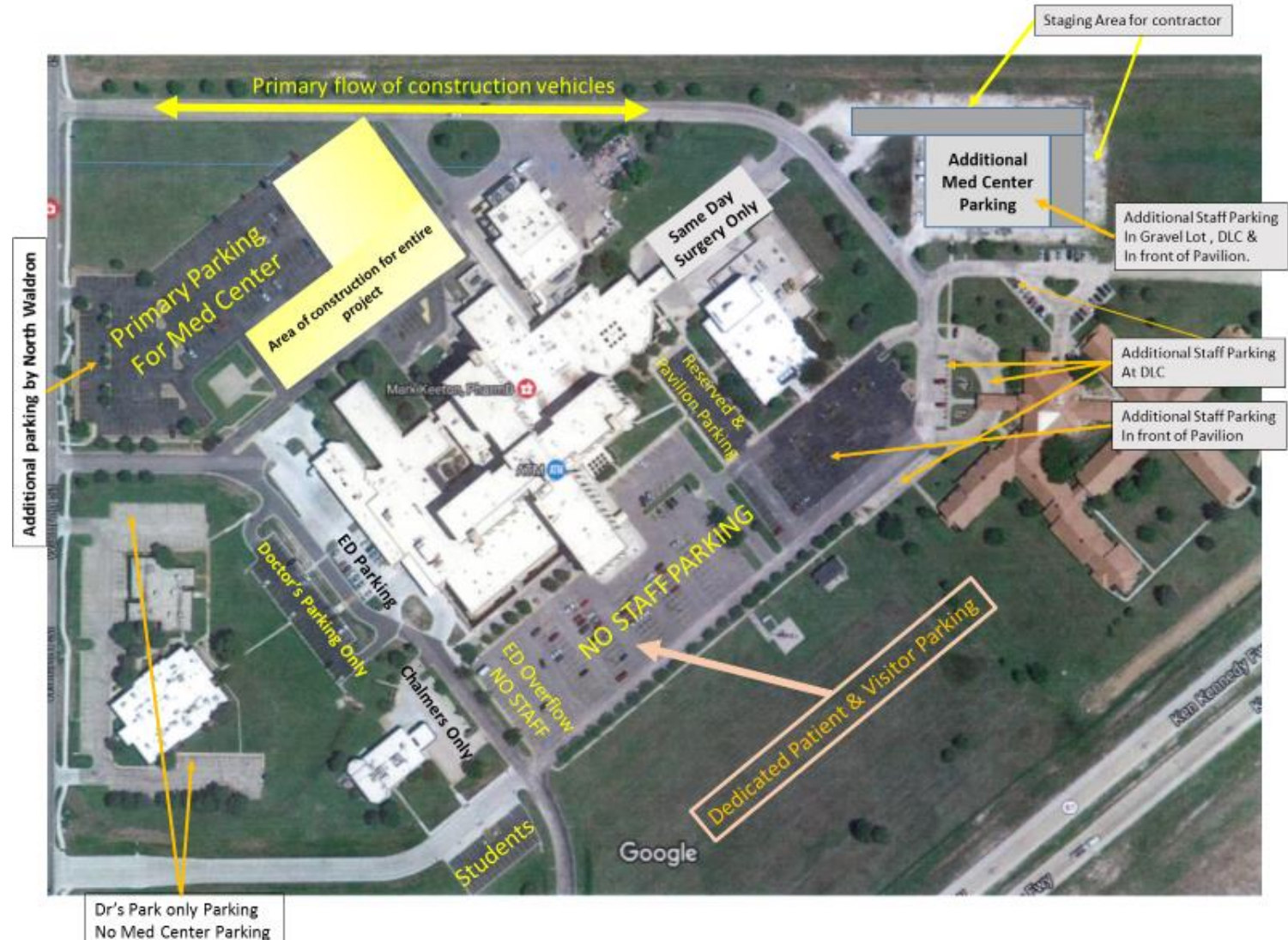


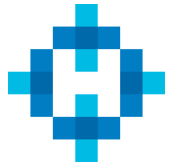
Why the project needed to happen



Desired Outcomes and Importance

- Primary infrastructure 1971-1975
- Well built, solid, adaptable, significant deferred maintenance
- Critical systems were 45 years old
- As-builts and civil engineering drawings were lost or damaged
- 200 bed Acute Care license; 12 patient wards; Reno County EMS; Level III Trauma Center
- Joint Commission Accredited; Gold Standard Stroke Center, CAP & ACR Accredited, etc.





CARL HARRIS CO., INC.



WICKHAM GLASS CO.

Design Method

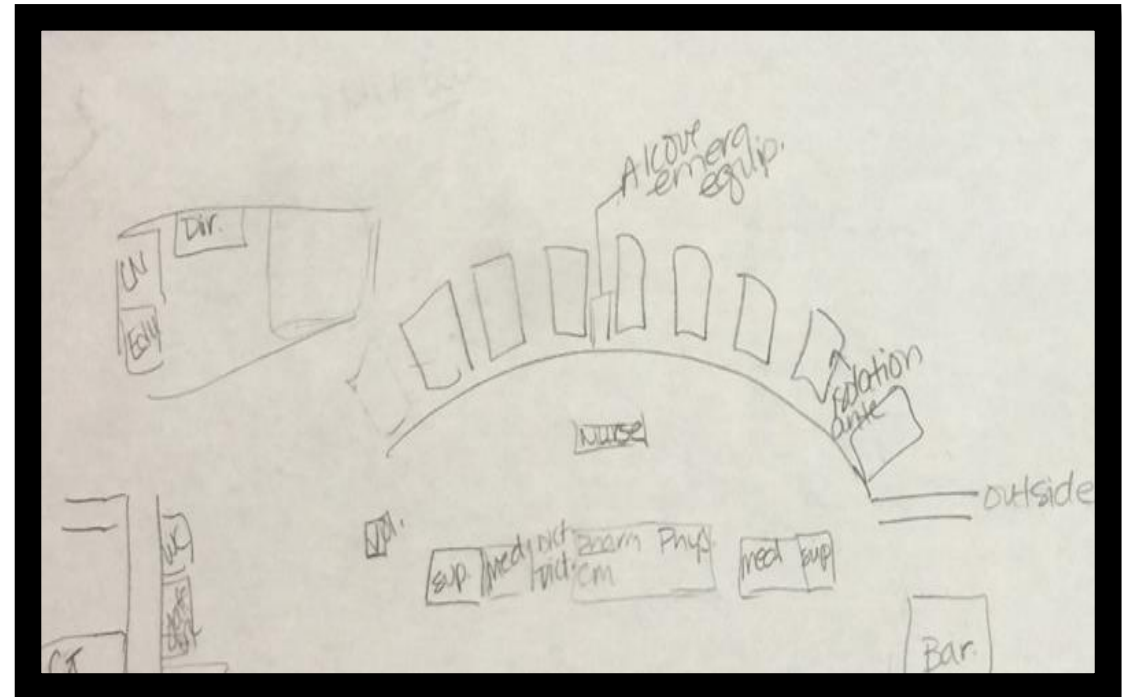
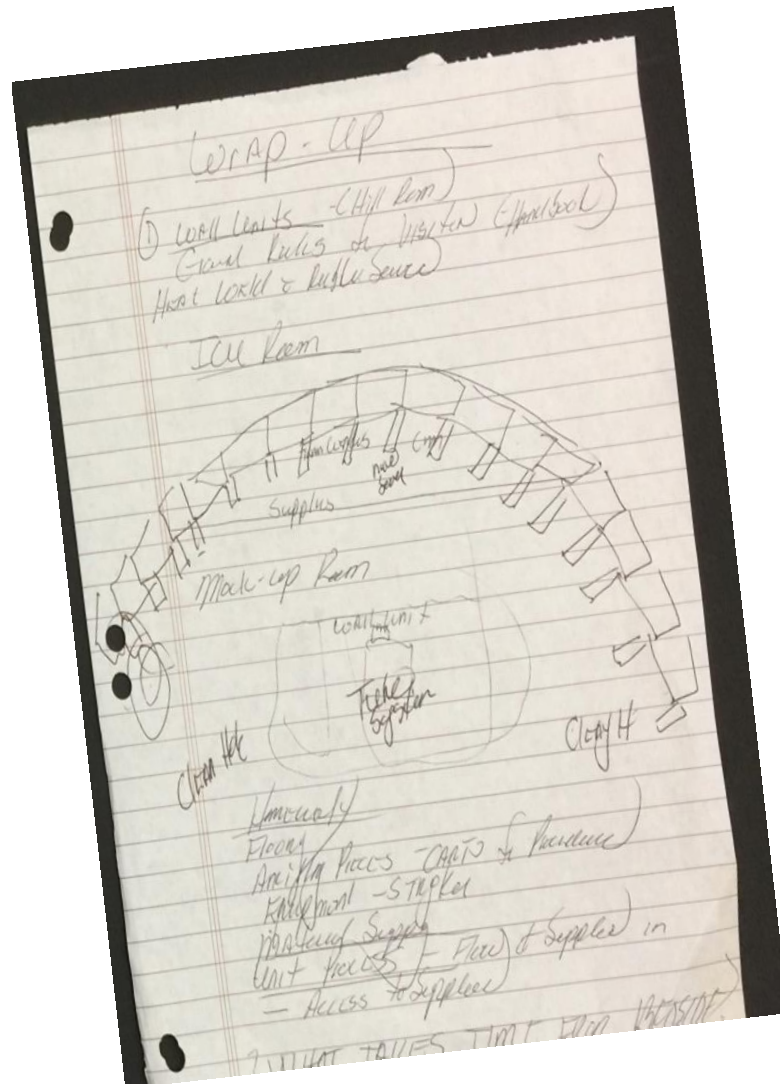
- Bringing the team together
- Maintaining focus on the finish line
- Involving staff early and often; their vision
- Engaging the Board and the community
- Choosing the right partners
- Knowing when to be flexible and/or firm
- Leveraging all forms of communication
- Be patient; be focused; be a part of the process



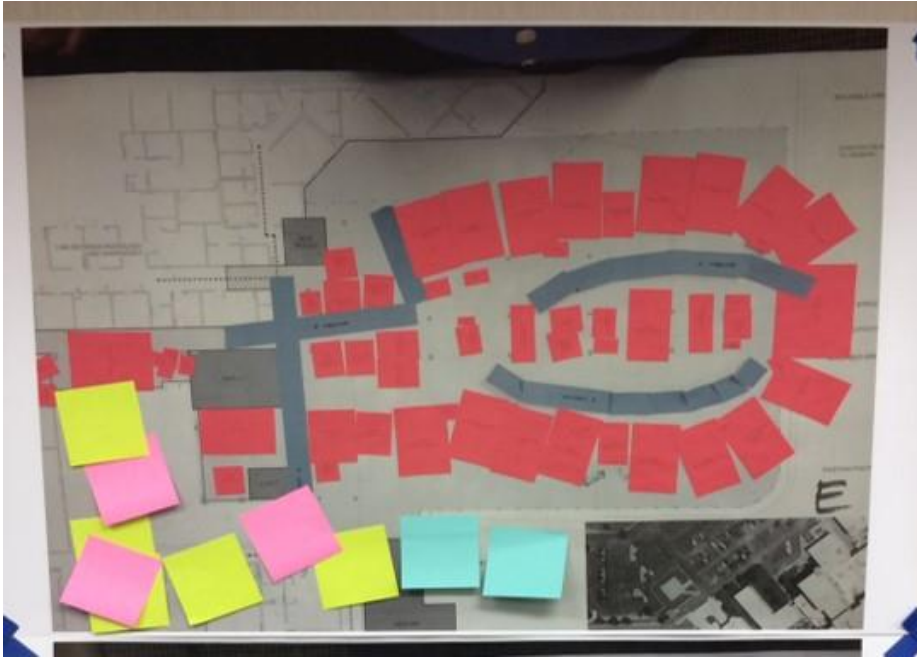
Technology and Collaboration

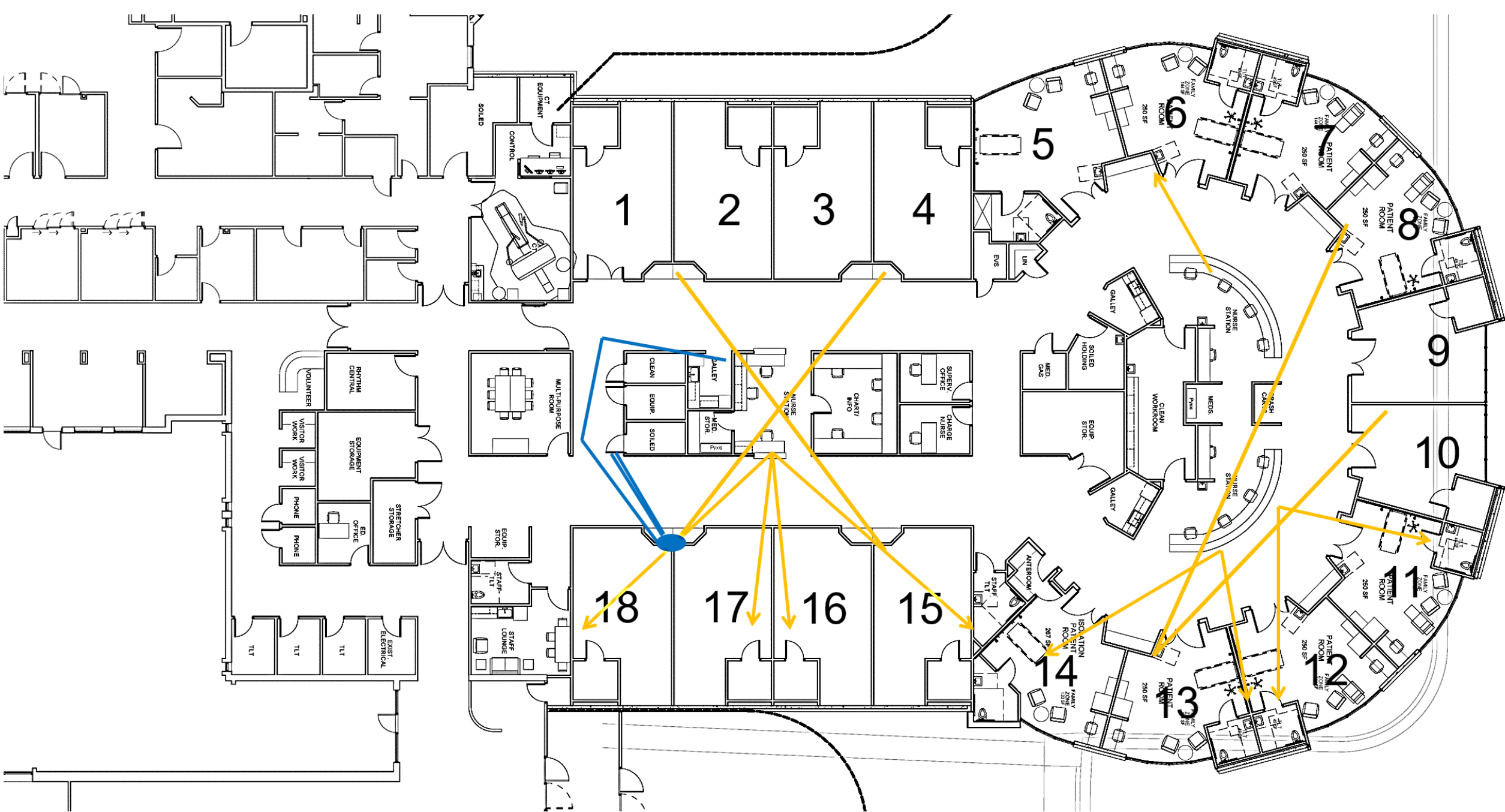
From the Perspective of the Architect and End User

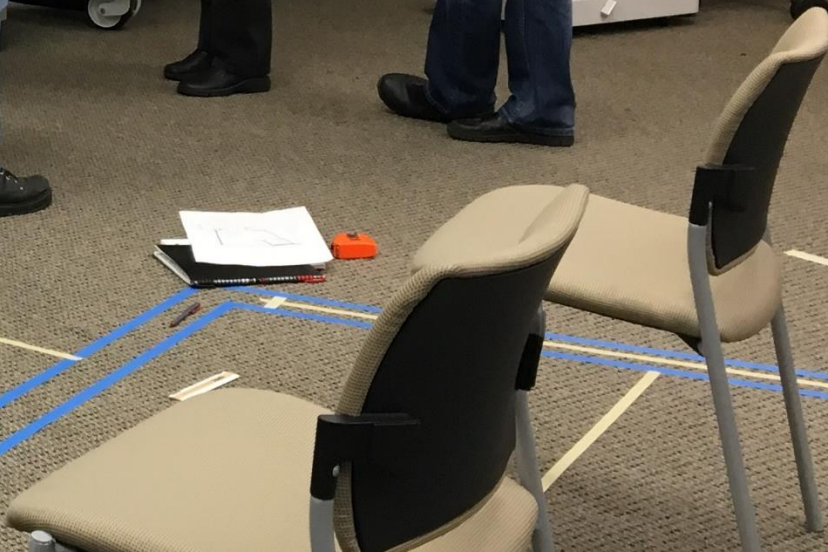
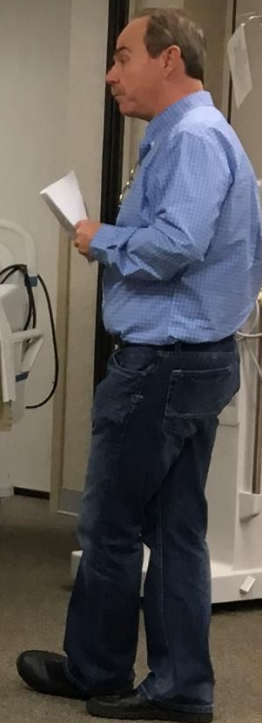
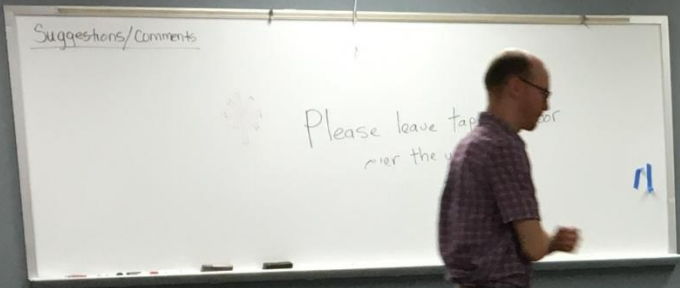
Where the idea started















The Design Process







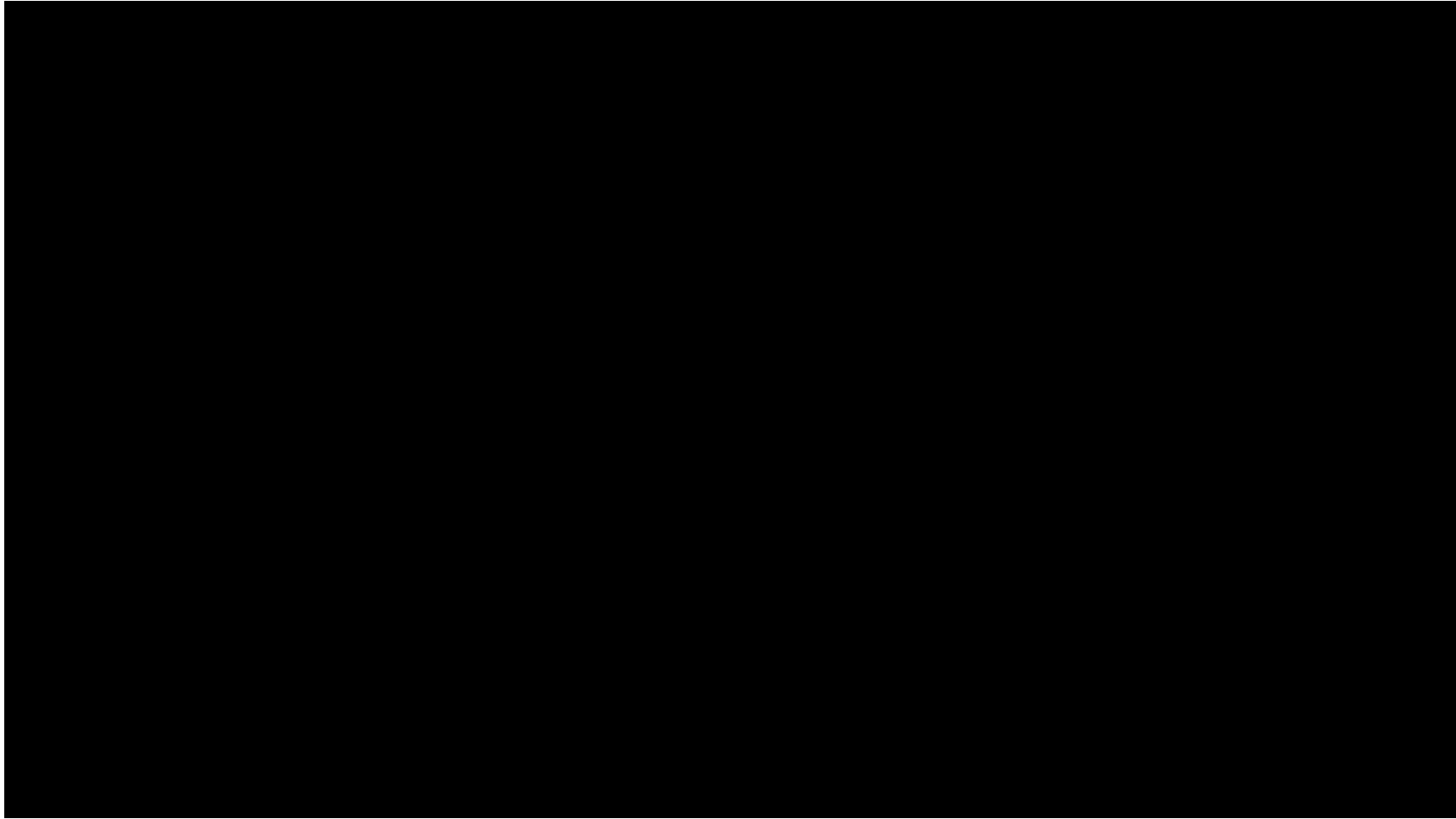


Data Collection With Technology

Communication between construction & design teams













Making Innovation Routine

Questions and Answers

